



**FIREHOUSE**  
Software®



## **FH Mobile Preplans Installation and Introduction Guide**

expertise in action™



**Copyright** ©1993 - 2008 Affiliated Computer Services, Inc. (ACS) WSpell ActiveX Spelling Checker ©1997-2002  
2900 100th St., Suite 309 Wintertree Software Inc.  
Urbandale, Iowa 50322 PDFRasterizer.NET © 2001-2005  
All rights reserved TallComponents BV  
3rd 10/05, 4th 9/07, 5th 12/08

**Trademarks** FIREHOUSE Software® is a registered trademarks of ACS. All rights reserved. Microsoft, MS, MS-DOS, Microsoft Visual FoxPro, and Microsoft Access are registered trademarks. Windows is a trademark of Microsoft Corporation. CAMEO is a registered trademark. All other products or services mentioned in this manual are identified by the trademarks or service marks of their respective companies or organizations. ACS disclaims any responsibilities for specifying which marks are owned by which companies or organizations.

**Copy and Use Restrictions** FIREHOUSE Software is protected by the copyright laws that pertain to computer software. It is illegal to make copies of the Software except for backups. It is illegal to rent, lease, sublicense, or otherwise transfer any of the materials. It is illegal to remove or obscure proprietary notices. It is illegal to duplicate and distribute the Software by any other means, including electronic transmission. To protect trade secrets contained in the Software, you may not decompile, reverse engineer, disassemble, or otherwise reduce the Software to human perceivable form. You may not modify, adapt, translate, rent, lease, or create derivative works based upon the Software or any part thereof.  
ACS warrants the original diskettes and CDs are free from defects in material and workmanship, assuming normal use, for ninety (90) days from the date of purchase.

**Warranty** Except for the express warranty of the original CDs and diskettes set forth above, ACS grants no other warranties, express or implied, by statute or otherwise, regarding the CDs and diskettes and related materials, their fitness for any purpose, their quality, their merchantability, or otherwise. The liability of ACS, under the warranty set forth above, shall be limited to the amount paid by the customer for the product. In no event shall ACS be liable for any special, consequential, or other damages for breach of warranty.

**Manuals and Documentation** © 2008 ACS — Printed in the United States. All rights reserved. No part of this work covered by copyright hereon may be reproduced in any form or by any means — graphic, electronic, or mechanical — including photocopying, recording, taping, or storage in an information retrieval system, without the written permission of the copyright owner.

### **Contacting FIREHOUSE Software:**

#### **Sales:**

##### **International**

Phone: 800 921 5300 ext. 1 Fax: 515 288 4825 fhsales@acs-inc.com

#### **AZ, CA, NV, OR, WA**

Jim Brandariz

Phone: 800 796 1614, 530 621 0981

Fax: 530 626 8582

jim.brandariz@acs-inc.com

#### **AR, KS, LA MO, MS, OK, TX**

Mike Rogers

Phone: 888 941 3473, 214 504 0242

Fax: 214 504 0244

mike.rogers@acs-inc.com

#### **AK, AL, CO, GA, FL, HI, ID, IA, IL, MI, MN, MT, NC, ND, NE, NM, SC, SD, TN, UT, WI, WY**

Roger Dedoncker | Jason Trotter

Justin Powell

Phone: 800 9215300 ext. 1

Fax: 515 288 4825

fhsales@acs-inc.com

#### **CT, MA, ME, NH, NY, RI, VT, Ontario**

Peter Eleftherakis

Phone: 888 362 4446, 508 362 4446

Fax: 508 362 5932

peter.eleftherakis@acs-inc.com

#### **DE, IN, KY, MD, NJ, OH, PA, VA, WV**

Forrest Nace

Phone: 800 285 8685

Fax: 724 283 9086

forrest.nace@acs-inc.com

**Technical Support:** Phone: 800 921 5300 ext. 2 support@firehousesoftware.com

# Contents

<b>Important Terms</b>	<b>1</b>
<b>How FH Mobile Preplans Works</b>	<b>1</b>
<b>System Requirements</b>	<b>2</b>
<hr/>	
<b>Configuring FH Mobile Preplans</b>	<b>8</b>
<b>About Global Configuration Options</b>	<b>8</b>
<b>About Mobile Preplan Options</b>	<b>12</b>
<b>About Master Workstations</b>	<b>14</b>
<hr/>	
<b>Using FH Mobile Preplans</b>	<b>16</b>
<b>Synchronizing Data</b>	<b>16</b>
<b>Reviewing Occupancy Data</b>	<b>17</b>
<b>Accessing Reference Material</b>	<b>25</b>
<b>Records Not Synchronized</b>	<b>27</b>
<b>Synchronization Does Not Run From Inside FH Mobile Preplans</b>	<b>27</b>
<b>Licensing Expired Evaluations</b>	<b>27</b>
<b>Slow Record Access</b>	<b>27</b>
<b>Uninstalling FH Mobile Preplans</b>	<b>28</b>

# Chapter I

## Overview

This guide contains everything you need to know to install, configure, and use FH Mobile Preplans.

We urge that all FH Mobile Preplans users read this guide.



We distribute evaluation copies so you can freely evaluate this program under actual service conditions. Install FH Mobile on any computer or network at your department (see “System Requirements” later in this chapter). If there are no computers available at your department, a department member’s personal computer at home will do. The installation program creates a fully functional system with all modules available to install on your hard disk. The evaluation will run for 90 days after installation.

### Important Terms

Throughout this guide, certain terms are used:

- ‘FH Mobile Preplans’ is a mobile computer application that displays occupancy and inspection records and detail records.
- ‘Mobile computer’ is the mobile computer where FH Mobile Preplans is installed.
- ‘FH database’ is an FH installation where occupancy records are entered. The FH Mobile Preplans installation on the mobile computer needs to have access to the FH database to create a local copy of the occupancy records on the mobile computer.

### How FH Mobile Preplans Works

FH occupancy records are copied from your FH database (FH standard or FH Enterprise) to a local database on the mobile computer and the FH Mobile Preplans viewer displays and reads the occupancy information in a format designed for use while en route to scene.



Different methods for attaching files to occupancy records are recommended based on whether you use the standard version of FIREHOUSE Software or a client/server version (FH Enterprise or FH Web). All users should choose the attached files option to 'Store a copy on the server'. This will store a copy of the attached file to the attachments data table within the FH database. Use JPG files if possible to minimize file size and to automatically display in FH Mobile Preplans. If

you use a standard version of FIREHOUSE Software, the attachments data table is limited to 2GB in size. If you use the Enterprise version with SQL Server 2005 Express edition, the total FH database is limited to 4GB. Enterprise Edition users running SQL Server 2000 or 2005 do not have any size limits. Details for synchronizing attachments are described in 'To Set Occupancy Attachment Options' on page 14.

## System Requirements

FH Mobile Preplans requires the following:

- Mobile computer with:
  - Windows® 2000, Windows® XP (Windows XP Tablet PC Edition is recommended), or Windows® Vista Business Edition.
  - 600MHz Pentium III compatible processor or higher.
  - 512 MB available RAM (we recommend 1GB or more).
  - 2 GB available hard disk space (your requirements may be greater depending on the number of records you synchronize and the size of embedded attachments. We recommend 4 GB of free disk space).
  - 800 by 600 minimum video resolution (we recommend at least 1024 by 768).
- Connection to FH standard or FH Enterprise database version 7.3.15 or greater. The connection only needs to be made to synchronize the FH Mobile Preplans database.
  - If you run FH Enterprise, you can also optionally maintain a wireless connection between FH Mobile Preplans and your FH Enterprise database. When *Real-Time Wireless* is enabled and you open an occupancy in FH Mobile Preplans, updated occupancy information is added from your FH Enterprise occupancy if it has updated information.

# Chapter 2

## Installing and Licensing FH Mobile Preplans

This chapter details FH Mobile Preplans installation and licensing procedures. You install FH Mobile Preplans on the mobile computer and separately license the Mobile computer to access the occupancy records in your FH database.

### To Install FH Mobile Preplans On Mobile Computer

- ⊕ If you are installing FH Mobile on a Windows 2000 or Windows XP workstation, log on to the mobile computer as an administrator and complete the following steps:



You should close all open applications before installing FH Mobile Preplans and disable anti-virus software. You may be prompted to restart your computer during the install. We recommend **Yes** if prompted to proceed with the installation.

- ⊕ From the Windows **Start** menu, select **Control Panel**.
- ⊕ Double click **Add or Remove Programs**. The **Add or Remove Programs** form is displayed.
- ⊕ Press **Add New Programs** then press **CD or Floppy**.
- ⊕ Insert the FH Mobile CD.
- ⊕ Press **Next>**, press **Browse**, then select **FHMobile\_Setup.EXE**, then press **Open**.
- ⊕ Press **Finish**. The **FH Mobile Setup** form is displayed.
- ⊕ If you are installing FH Mobile on a Windows Vista workstation, log on to the mobile computer as an administrator and complete the following steps:



Windows Vista has an option turned on by default that will make FH work improperly. We recommend turning off the User Account Control before installing FH Mobile. Go to the **Start** Button, *Control Panel* option, then *User Accounts* option. You should see a link titled *Turn User Account Control on or off*. Uncheck the box to turn this feature off. This will require a restart of the computer.

- ⊕ Insert the FH Mobile CD into the appropriate drive. A FIREHOUSE Software Mobile installation menu is automatically displayed.



If autorun is disabled, select the **Start** button, *Search* option. Type **Run** to open the *Run* command window. Type **n: \autorun** (where *n* is the CD drive letter)

then press **OK**. The installation window is displayed. You can also double-click the CD drive icon.

- ⊕ Press **Install FIREHOUSE Software Mobile Client Applications** option of the installation menu. The **FH Mobile Setup** form is displayed.
- ⊕ Press **Next**. Complete installation by following prompts and selecting desired options then pressing **Next**. Available installation options vary based on the configuration, but could include the following pages:



An instance of Microsoft SQL Server 2005 Express Edition and Windows system components may be installed depending on the workstation configuration. The component installation will take several minutes. If an instance of a previous version of SQL Server is detected by the installer, you will have a choice to upgrade to SQL Server 2005 Express. We recommend upgrading to increase the database size maximum.

- *User Information*. Personalize the installation with your name and organization, and specify whether the FH Mobile application can be used by all users that access the computer (select *Anyone who uses this computer*) or only by the user currently logged in to the workstation (select *Only for me (USERNAME)*).
- *Destination Folder*. Change the destination folder from the default (**C:\Program Files\FIREHOUSE Software Mobile\**) only if needed. must be installed to a location on C:\.
- *Select Features*. Accept the default selection unless you have a specific reason to change.
- *Microsoft SQL Server*. Select the minimum Windows security level required to view FH Mobile Preplans records. We recommend *Standard User* to ensure everyone can access FH Mobile Preplans.
- *SQL Server Database Settings*. If this page is displayed, a previous installation was identified. Check *Install a new blank database* if you are starting over (all settings are lost). Check *Update the existing database* to install an updated database but save settings.
- *Read Me Information*. Important installation notes are displayed.



Synchronized occupancy records from the FH database (standard or FH Enterprise) are stored in an MS SQL database on the mobile computer that FH Mobile Preplans uses. For workstations that already include an SQL server, an additional database instance is created for the local FH Mobile application database.

- ⊕ Press **Next**.
- ⊕ Press **Finish**.
- ⊕ Press **Yes** when prompted to restart the computer.

FH Mobile Preplans is installed and ready to be licensed.

## To License Mobile Computer

- ⊕ If you are installing FH Mobile on a Windows 2000 or Windows XP workstation, log on to a workstation with administrative rights where an installation of the FH standard or FH Enterprise software is activated.
  - ⊕ From the Windows **Start** menu, select the **Control Panel** option.
  - ⊕ Choose **Add or Remove Programs**. The **Add or Remove Programs** form is displayed.
  - ⊕ Press **Add New Programs** then press **CD or Floppy**.
  - ⊕ Insert the FH Mobile CD.
  - ⊕ Press **Next>** then **Browse** to display the **Browse** dialog. Change the *Files of Type* to "Programs", select **FHMobile\_LicMgr.EXE**, then press **Open**.



Do not run **FHMobile\_LicMgr.EXE** from the CD more than once. To add workstations after the initial set up, run the **FHMOBLic.EXE** in the FH root directory (**C:\Program Files\FIREHOUSE Software** by default, yours may be different).

- ⊕ Press **Finish**.
- ⊕ If you are installing on a Windows Vista workstation, log on to a workstation with administrative rights where an installation of the FH standard or FH Enterprise software is activated.
  - ⊕ Insert the FH Mobile CD into the appropriate drive. A **FIREHOUSE Software Mobile** installation menu is automatically displayed.
  - ⊕ Press **Install the FIREHOUSE Software Mobile License Manager**. The **Welcome** form is displayed.
- ⊕ Locate FH installation:
  - ⊕ If you know where your FH database is stored, check *Skip automatic search for existing installations*. The default FH location is displayed if available. If you need to specify a different FH location, press **Browse**, locate the FH installation, then press **OK**.
  - ⊕ If you do not know where your FH database is stored, leave *Skip automatic search for existing installations* unchecked, then press **Next** to have the installation search and list FH installations (the process may take several minutes).
- ⊕ Press **Next>** then specify the evaluation licenses you wish to install. Do not select an evaluation license if you have purchased a license.
- ⊕ Press **Next>**. The **Installation Complete** form is displayed.
- ⊕ Press **Run FIREHOUSE Software Mobile License Manager**.
- ⊕ Type the *User Name* and *Password* for the FH database, then press **OK**.
- ⊕ Apply license:
  - ⊕ If you selected an evaluation license above, you are prompted to apply the evaluation activation file. Press **Yes** to activate the evaluation license then skip to the numbered step below.

- ⊕ If you have purchased FH Mobile Preplans and received an activation diskette, press **Activate FH Mobile License File...**
    - ⊕ Insert the **FH Mobile Activation** diskette, locate the **FHmobile.LIC** file located on the diskette, then press **OK**.
  - ⊕ If you have purchased FH Mobile Preplans and received an activation code number, press **Enter Activation Code...**
    - ⊕ Type the *Serial Number* and *Activation Code* in the fields provided, then press **OK**.
1. Press **Add**, then determine the mobile computer name that will run FH Mobile applications. To determine the mobile computer name if you do not know it:
    - ⊕ Highlight the mobile computer's Windows *My Computer* desktop icon, right-mouse click, then select **Properties**.
    - ⊕ Select the *Computer Name* tab. The *Full computer name:* value lists the computer name.
  2. Type the mobile computer name. If the name includes a period, use the name to the left of the first period.
  3. Press **OK**. The workstation is added. Repeat numbered steps until all mobile computer names using FH Mobile Preplans are added. You must be licensed for each workstation listed.
- ⊕ Press **Close**.
  - ⊕ Press **Finish**.

You are ready to use FH Mobile Preplans. Note that you are prompted to synchronize.

# **Chapter 3**

## **Use FH Mobile Preplans on the Mobile Computer**

FH Mobile Preplans is an FH application that runs on your mobile computer and allows department personnel to review occupancy information. FH Mobile Preplans is specifically designed to be used en route to an incident, with large oversized buttons and an audible reader.

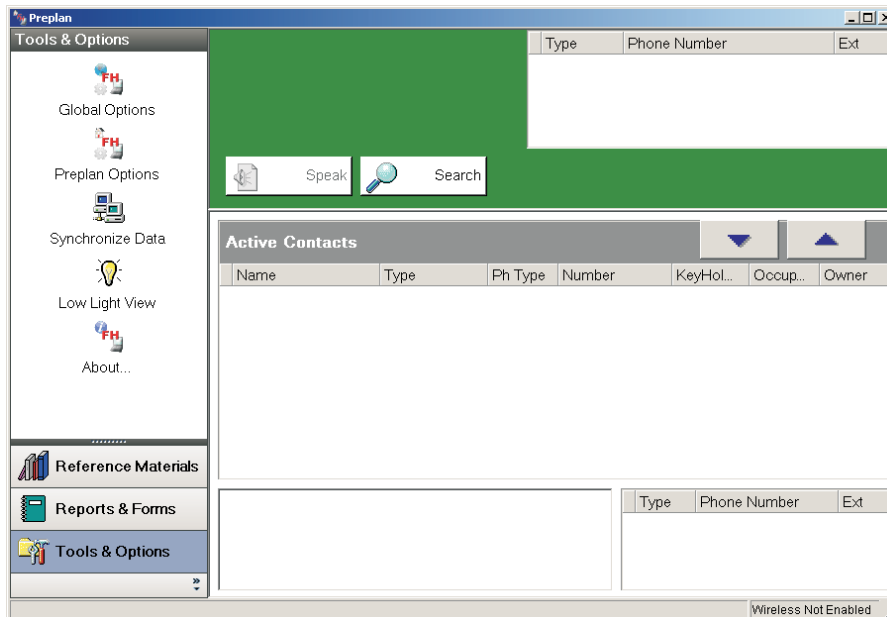
# Configuring FH Mobile Preplans

There are global and occupancy configuration options that control FH Mobile Preplans behavior.

## About Global Configuration Options

Global options include display options that specify the desktop appearance, connection options, filter options, and update options.

The Connection Options define where the FH database is located. The mobile computer must be licensed to complete this process. You need to set Connection Options when you first access the FH Mobile Preplans application.



No occupancy records have been selected. First, you will need to set up a connection the FH database, then you can control the appearance and add additional filtering options.

After specifying global connection options, you can specify display and filter options, and change connection options. Display options control the overall appearance of the FH Mobile Preplans desktop and the size and spacing of text in the application workspace. Filter options can be specified so that only occupancy records from specified stations are included when synchronizing records.

### To Set Connection Options (First Time)

- ➊ From the Windows **Start** menu, select the **FIREHOUSE Software Mobile** folder then select the **Preplan Viewer** option.

- ⊕ You are prompted to enter database information. Press **OK**. The **FH Mobile Options** form is displayed with the *Database* section **Connection** option displayed.
- ⊕ Select *Standard* or *FH Enterprise*.

The screenshot shows the 'FH Mobile Options' dialog box. On the left is a navigation pane with 'FH Database' selected. The main area is titled 'FH Database' and contains the following elements:

- A sub-section 'FH Database' with icons for 'Connection', 'Data Filter', 'FH', and 'Software Updates'.
- A text prompt: 'Enter connection information for the remote FIREHOUSE Software database that you are going to synchronize to:'
- 'Database Type:' with radio buttons for 'Standard' and 'FH Enterprise' (selected).
- Input fields for 'Server Name', 'Database Name', 'User Name', and 'Password'.
- A 'Test Connection' button.
- Checkboxes for 'Enable Real-Time Wireless connection to the FH Enterprise Database' and 'Use transactions for updates to the FIREHOUSE Software database'.
- Buttons for 'Save', 'Save & Sync', and 'Cancel' at the bottom.

- ⊕ If *Standard*, specify the database location, lookup tables (by default, the lookup database is in the same location as the database, but yours may be different), Report tables, Query tables, and the location of the System database.
- ⊕ If *FH Enterprise*, specify the server name and database name, and your user name and password.
  - ⊕ Check *Enable Real-Time Wireless Connection to the Enterprise Database* if you have a wireless connection and wish to check for the most up-to-date record when reviewing a specific occupancy. This option will add overhead to the review process and can be slow depending on your configuration.



When *Enable Real-Time Wireless Connection to the Enterprise Database* is enabled and a record is updated that includes large attachments, the attachments may not be displayed initially with the occupancy information. The displayed occupancy information can be reviewed and the status bar lists "New Attachments Downloaded" when the attachments are available.

- ⊕ Press **Save & Sync**.
- ⊕ Press **Yes** to prompts (if prompted).

#### To Set Display Options

- ⊕ From the Windows **Start** menu, select the **Programs** option **FIREHOUSE Software Mobile** folder then select the **Preplan Viewer** option.
- ⊕ If the database has been synchronized, the **Search** form is displayed. Press **Cancel**.
- ⊕ Select the **Global Options** icon.
- ⊕ Select a font size (*11 point* is the default).
- ⊕ Select navigation bar theme (*Navigation Pane View* is the default).
- ⊕ Select navigation bar image size (*Large* is the default).
- ⊕ Select data grid row height (*32 point* is the default).
- ⊕ Check *Use Built-In Keyboard/Pen Input Panel* to add a built in keyboard/pen input entry (only used in the **FH Mobile Options** form).
- ⊕ Press **Save**.

#### To Change Connection Options

- ⊕ From the Windows **Start** menu, select the **Programs** option **FIREHOUSE Software Mobile** folder then select the **Preplan Viewer** option.
- ⊕ Select the **Global Options** icon.
- ⊕ Select the *FH Database* navigation bar then click the *Connection* icon.

See the procedure 'To Set Connection Options (First Time)' on the previous page for a description of options.

#### To Set Filter Options

- ⊕ From the Windows **Start** menu, select the **Programs** option **FIREHOUSE Software Mobile** folder then select the **Preplan Viewer** option.
- ⊕ If the database has been synchronized, the **Search** form is displayed. Press **Cancel**.
- ⊕ Select the **Global Options** icon.
- ⊕ Select the *FH Database* navigation bar then click the *Data Filter* icon.
- ⊕ Type the station or stations to include. If adding multiple stations, add a comma (",") after the first station then type the additional station code.
- ⊕ Type the district or districts to include. If adding multiple districts, add a comma (",") after the first district then type the additional district code.
- ⊕ Press **Save**.

#### To Set Update Options

- ⊕ From the Windows **Start** menu, select the **Programs** option **FIREHOUSE Software Mobile** folder then select the **Preplan Viewer** option.
- ⊕ If the database has been synchronized, the **Search** form is displayed. Press **Cancel**.
- ⊕ Select the **Global Options** icon.
- ⊕ Select the *FH Database* navigation bar then click the *Software Updates* icon.
- ⊕ Select the method to distribute FH Mobile Preplans updates when they are available:

- ⊕ Select *Never prompt to update (I will install all updates manually)* to never download an FH Mobile Preplans update from the server to a mobile workstation.
- ⊕ Select *Prompt to update only when performing a full sync* to check for an FH Mobile Preplans update and to prompt only during a full synchronization (the option will not prompt to update FH Mobile Preplans when *Enable Real-Time Wireless Connection to the Enterprise Database* is active and an occupancy record is updated).
- ⊕ Select *Prompt to update on any sync (Full or Real-time)* to check for FH Mobile Preplans updates any time records are synchronized.
- ⊕ Press **Save**.

#### To Set Central Reference Material Location

- ⊕ From the Windows **Start** menu, select the **Programs** option **FIREHOUSE Software Mobile** folder then select the **Preplan Viewer** option.
- ⊕ Select the **Tools & Options** area **Global Options** option.
- ⊕ Select the *Reference Materials* navigation bar then click the *Reference Materials* icon.



All files and subdirectories in the central reference material location are copied to the FH Mobile computer by the synchronization process and are displayed in the **Reference Materials** area. Only include files that are likely to be used.

- ⊕ Specify the central reference materials location:



The central reference material location needs to be accessible to all FH Mobile workstations that will synchronize with the FH database.

- ⊕ If the folder already exists, press **Browse**, select the folder, then press **OK**.
- ⊕ If the folder does not exist, press **Browse**, select a drive that is accessible to all FH Mobile workstations (at least at the time of synchronization), then press **Make New Folder**, type the central reference materials folder name, then press **OK**.

See 'Accessing Reference Materials' on page 25 for the steps to add files to the central location. For your reference, write the path of the central directory:

- ⊕ Select the appropriate copy option:
  - ⊕ *Only copy new or changed files from server* to copy files from the server to the FH Mobile computer.
  - ⊕ *Copy new or changed files from the server, and delete files in the local folder that are not on the server* to remove files located in the local FH Mobile reference folder that are not included in the central location.



If files are potentially useful at ALL FH Mobile computers, be sure to copy the file to the central location.

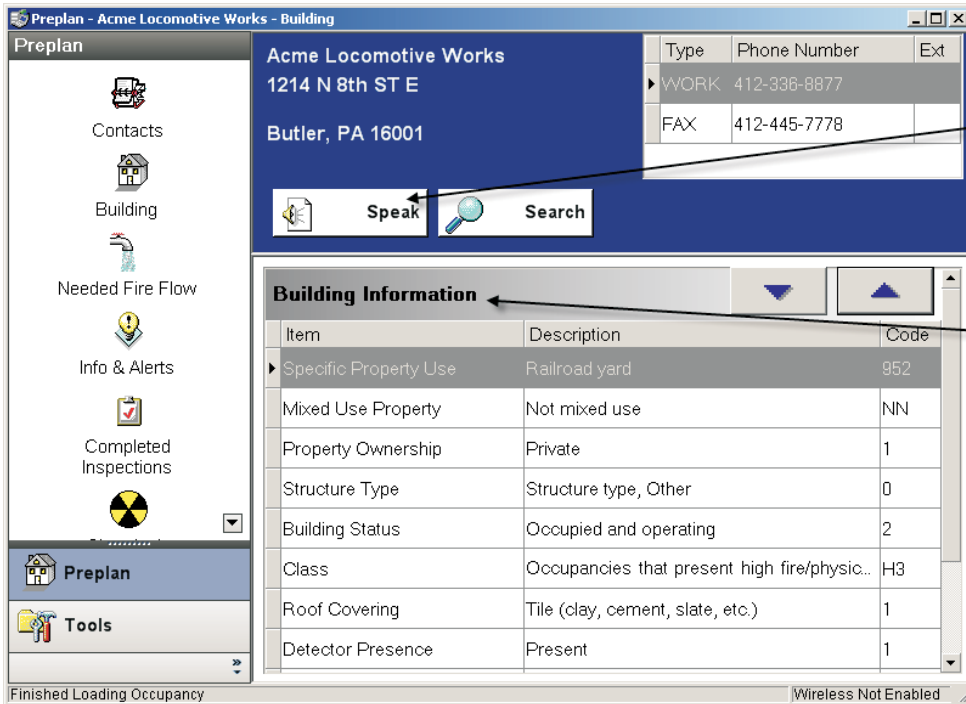
⊕ Press **Save**.

To Toggle between Low Light and Normal Views

- ⊕ From the Windows **Start** menu, select the **Programs** option **FIREHOUSE Software Mobile** folder **Preplan Viewer** option. The FH Mobile Preplans main window is displayed.
- ⊕ Select the **Tools & Options** area.
- ⊕ Select **Normal View/Low Light View**:
  - ⊕ When you select **Low Light View**, the background is changed to black with white text to optimize the FH Mobile workspace for low light situations.
  - ⊕ When you select **Normal View**, the background is changed to normal colors.

### About Mobile Preplan Options

You can change the way data grids display, specify whether a synthesized voice reads occupancy information and which areas are included, and you can specify how non-embedded record attachments are treated by FH Mobile Preplans.



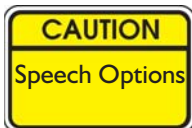
You can control whether occupancy information is automatically announced when a record is opened, and specify what information is announced.

Information is displayed in data grids. You can exclude information and set the display order of records in data grids.

#### To Set Occupancy Data Grid Options

- ⊕ From the Windows **Start** menu, select the **Programs** option **FIREHOUSE Software Mobile** folder then select the **Preplan Viewer** option.
- ⊕ If the database has been synchronized, the **Search** form is displayed. Press **Cancel**.
- ⊕ Select **Preplan Options**.
- ⊕ Select a data grid to modify.
- ⊕ Press **Edit Data Column...**
- ⊕ Highlight the data grid column to modify. You can do the following:
  - ⊕ Change the sequence. The number you type here is assigned to the highlighted item and the item with the original value receives the original item's value. Press **OK** when completed.
  - ⊕ Uncheck *Display* to remove the selected column from the data grid.
  - ⊕ Press **Save**.
- ⊕ Check *Display blank fields in data grids* to include data grids even when fields do not include values. Leave *Display blank fields in data grids* unchecked if you do not want blank fields in date grids.
- ⊕ Press the drop down arrow to select the *Top Panel Color* value. A distinct top panel color helps identify a specific FH Mobile application when more than one is available (for example, select FH Mobile Incident Command when FH Mobile Preplans is also running).
- ⊕ Press **Save**.

#### To Set Occupancy Speech Options



You should carefully evaluate the available speech options in the field. The text to speech interpretation of misspellings, symbols, and abbreviations may vary from the visual interpretation. Even when using the speech option to read occupancy information, you should visually scan information.

- ⊕ From the Windows **Start** menu, select the **Programs** option **FIREHOUSE Software Mobile** folder then select the **Preplan Viewer** option.
- ⊕ If the database has been synchronized, the **Search** form is displayed. Press **Cancel**.
- ⊕ Select **Preplan Options**.
- ⊕ Select *Speech*.
- ⊕ Check *Automatically speak when occupancy is selected* to read the occupancy name and address when the occupancy record is opened.
- ⊕ Check additional detail records to read. Note that *Automatically speak when occupancy is selected* must be checked to automatically read the selected areas. If *Automatically speak when occupancy is selected* is not selected, you will need to press **Speak** to hear the computer synthesized voice read selected areas.
- ⊕ Select *Voice Type* and specify the rate the voice plays at.
- ⊕ You can modify what data elements are read from specific data grids:

- ⊕ Select the data grid to modify in the drop down, then press **Edit Data Columns...**
- ⊕ Highlight the data column to modify.
- ⊕ Change the *Sequence* to set the order the column is read, or uncheck *Speech* to exclude the data column from the reading when the data grid is read.
- ⊕ Press **OK**.
- ⊕ Press **Save**.

#### To Synchronize Occupancy Attachments

- ⊕ From the Windows **Start** menu, select the **Programs** option **FIREHOUSE Software Mobile** folder then select the **Preplan Viewer** option.
- ⊕ If the database has been synchronized, the **Search** form is displayed. Press **Cancel**.
- ⊕ Select **Preplan Options**.
- ⊕ Select *Attachments*.
- ⊕ Check *Download embedded attachments to this computer during sync* to include embedded attachments during synchronization. Note that the mobile computer must have the application associated with the attachment's extension to view the attachment.
- ⊕ Press **Save**.

The synchronization will look for an **Attachments** subfolder in the **Reference** folder specified in the **FH Mobile Options** form.

See 'To Specify Central Reference Materials Location' on page 11 for the steps to specify the central location.

## About Master Workstations

You can assign a specific mobile computer as the 'master' computer used to set global options. Options set up at the master computer are sent back to the FH database and distributed out to each FH Mobile workstation that synchronizes. When a master workstation is assigned, the following options are not accessible at the non-master FH Mobile workstations:

- Global settings for:
  - Schedule & Roster selections.
  - Software Updates selection.
  - Location of shared reference materials folder.
- FH Mobile Preplans settings:
  - Grid settings.
  - Speech settings.

#### To Assign Master FH Mobile Workstation

- ⊕ From the Windows **Start** menu, select **Programs** option **FIREHOUSE Software** folder **FIREHOUSE Software Mobile License Manager** option. The **FH Mobile License Manager** form is displayed.
- ⊕ Select 'FH Mobile Preplans' in the *Select Mobile Application* field.
- ⊕ Select the mobile workstation to assign as a master, then press **Set as Master**.
- ⊕ Press **OK** to prompt.
- ⊕ Press **Close**.

When the FH Mobile master workstation synchronizes with the FH database, all master settings are 'pushed' to FH then 'pulled' to the non-master mobile workstations as they synchronize with FH. Non-master FH Mobile workstations will not be able to modify the settings via their FH Mobile global and Preplans settings.

#### To Clear FH Mobile Master Assignment

- ⊕ From the Windows **Start** menu, select **Programs** option **FIREHOUSE Software** folder **FIREHOUSE Software Mobile License Manager** option. The **FH Mobile License Manager** form is displayed.
- ⊕ Select 'FH Mobile Preplans' in the *Select Mobile Application* field.
- ⊕ Select the master mobile workstation, then press **Clear Master**.
- ⊕ Press **Close**.

The FH Mobile master options are retained but changes to former master mobile workstation are not 'pushed' to FH and all FH Mobile workstations (including the former master) will not be able to modify the settings. To assign a new master FH Mobile workstation, all FH Mobile master options must be removed (see next procedure).

#### To Delete FH Mobile Master Options

- ⊕ From the Windows **Start** menu, select **Programs** option **FIREHOUSE Software** folder **FIREHOUSE Software Mobile License Manager** option. The **FH Mobile License Manager** form is displayed.
- ⊕ Select 'FH Mobile Preplans' in the *Select Mobile Application* field.
- ⊕ Select the master mobile workstation, then press the *Configuration Settings* tab.
- ⊕ Highlight the configuration setting to remove, then press **Remove**.
- ⊕ Press **Close**.

# Using FH Mobile Preplans

Once FH Mobile Preplans is installed and licensed and global options have been set, you are ready to use FH Mobile Preplans.

## Synchronizing Data

Synchronization is the process of copying FH occupancy records from the main database (FH standard or FH Enterprise) to an FH Mobile Preplans database located on the mobile computer. We recommend synchronizing your FH Mobile Preplans every time you return from a call. Even if *Enable Real-Time Wireless connection to the FH Enterprise Database* is enabled, you should synchronize after every use to ensure that the latest records are used and to optimize FH Mobile Preplans speeds (when a record is updated via wireless, there is a lag time as the record is reviewed and uploaded from the FH database). Records marked as *Hidden* in FH are not included in the synchronization.

### To Manually Synchronize Data Outside FH Mobile Preplans

- ⊕ From the Windows **Start** menu, select the **Programs** option **FIREHOUSE Software Mobile** folder then select the **Sync Data** option.
- ⊕ Check the appropriate items to synchronize.
- ⊕ If no filtering has been set up, you are prompted. Press **OK**.



If there is an error while data is being synchronized, FH Mobile Preplans will be closed and the original local FH Mobile Preplans database is restored. You should determine what interrupted the synchronization (e.g., lost connection), resolve, and run the synchronization again.

- ⊕ When the synchronization is finished, the **Synchronization Success** dialog is displayed. Press **OK**.

### To Synchronize Data From Command Prompt (No Dialogs)

- ⊕ From the Windows **Start** menu, select **Run...** then type "**<install directory>/FHMOBILE\_SYNC.EXE**" **/Q** in the *Open:* field (**C:/Program Files/FIREHOUSE Software Mobile/** is the default install directory, yours may be different).

No prompts are displayed before or after the synchronization process.



Automate the synchronization using an automated scheduling application, and use the command line above to ensure the synchronization runs without any user intervention required. If you

do this, we recommend reviewing the synchronization log to verify that the synchronization occurred.

#### To Manually Synchronize Data Inside FH Mobile Preplans

- ⊕ From the Windows **Start** menu, select the **Programs** option **FIREHOUSE Software Mobile** folder then select the **Preplan Viewer** option.
- ⊕ Click the *Tools & Options* navigation bar **Synchronize Data** option.
- ⊕ Check the appropriate items to synchronize.
- ⊕ Press **OK** to prompt. Records are synchronized.



If there is an error while data is being synchronized, FH Mobile Preplans will be closed and the original local FH Mobile Preplans database is restored. You should determine what interrupted the synchronization (e.g., lost connection), resolve, and run the synchronization again.

- ⊕ Press **OK** to prompt.

#### Reviewing Occupancy Data

Occupancy records are available for review following synchronization. The following information is available:

- occupancy contacts (expired contacts not included),
- building information,
- needed fire flow,
- information and alerts (preplans),
- completed inspections,
- chemicals,
- onsite materials,
- proximate hydrants,
- hazardous materials,
- storage tanks,
- attachments,
- user-defined field entries,
- occupancy last modification and synchronization dates.

#### To Select an Occupancy

- ⊕ From the Windows **Start** menu, select the **Programs** option **FIREHOUSE Software Mobile** folder then select the **Preplan Viewer** option. FH Mobile Preplans is opened with the **Search** form active.
- ⊕ Locate the occupancy to display and highlight, or if necessary change the number of occupancy records listed:
  - ⊕ If 'Occupancy Name' is specified in *Search In*:

- ⊕ Type several letters of any word included in the occupancy name into *Search for Value*. Occupancy records with words matching the letters typed in the *Search For Value* field are listed.
- ⊕ Highlight the occupancy.
- ⊕ If 'Address' is specified in *Search In*:
  - ⊕ Type numbers or letters included in the occupancy address into *Search for Value*. Occupancy records with an address that includes the numbers or letters typed in the *Search For Value* field are listed.
  - ⊕ Highlight the occupancy.
- ⊕ If 'Occupancy ID' is selected in *Search In*:
  - ⊕ Type Occupancy ID values into *Search for Value*. Occupancy records with a matching *Occupancy ID* are listed.
  - ⊕ Highlight the occupancy.
- ⊕ Press **Select** (also note that you can double click or press **Enter** to open the highlighted occupancy).
- ⊕ The selected occupancy is opened with general information displayed.
- ⊕ You can change how the information is conveyed. You can specify that information is 'spoken' by synthesized voice and control the columns included in data grids.

See 'To Set Occupancy Speech Options' on page 13 for more information.

The screenshot displays a mobile application interface for viewing occupancy details. The main content area shows the following information:

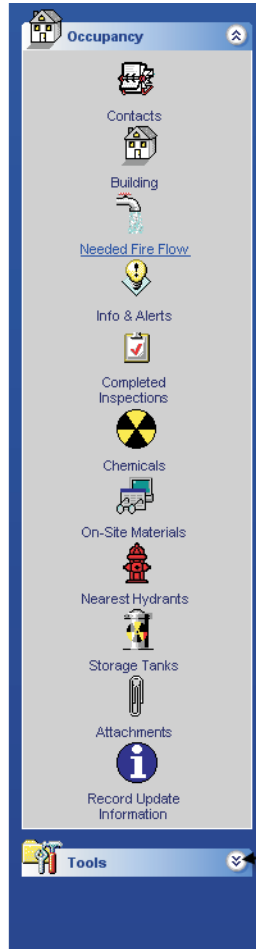
- Basic occupancy information is displayed:** Keystone Hobby Store, 1040 Pleasant Valley BLVD, Butler, PA 16001, PropID: BUTLER0001.
- Press to read occupancy information aloud. Audible information can be automatically read:** A 'Speak' button with a speaker icon.
- Press to display available occupancies:** A 'Search' button with a magnifying glass icon.
- When the occupancy is part of a Multi-Occupancy Property Record, the navigation buttons are available for moving between the occupancies that share a common Property ID value:** A 'Multi-Occupancy Property' section with navigation buttons (back, forward, and a grid icon) and a '2/4' indicator.

At the top right, there is a table with the following data:

Type	Phone Number	Ext
WORK	412-632-5587	

- ⊕ Available detail records vary based on information added to the occupancy record in FH.

Available Occupancy detail records are only displayed and available when information is included in the occupancy record.



The look of the navigation bar can be changed via 'Global Options'. In this example, the 'Explorer View' navigation bar theme was selected.

Click to expand 'Tools' options. Tools options include 'Global Options', 'Occupancy Options', 'Synchronize Data', 'Synchronization Log', and 'About'

#### To Review Active Contacts

- ⊕ From the Windows **Start** menu, select the **Programs** option **FIREHOUSE Software Mobile** folder then select the **Preplan Viewer** option. FH Mobile Preplans is opened with the **Search** form active.
- ⊕ Locate the occupancy to display and highlight, then press **Select** (also note that you can double click or press **Enter** to open the highlighted occupancy).


- ⊕ The selected occupancy is opened and when contacts are included with the occupancy, the *Active Contacts* page displayed.

Active Contacts						
Name	Type	Ph T...	Number	KeyHol...	Occup...	Owner
▶ William John S...	Primary Co...	MOBL	412-332...	<input checked="" type="checkbox"/>	<input type="checkbox"/>	<input checked="" type="checkbox"/>
Jeff Allen Jones	Supervisory	HOME	412-239...	<input checked="" type="checkbox"/>	<input type="checkbox"/>	<input type="checkbox"/>
Acme Locomoti...		NONE	NONE	<input type="checkbox"/>	<input type="checkbox"/>	<input type="checkbox"/>


Highlight a record in the data grid to display phone numbers and notes for the selected contact.

Out of contact range from June 1 until July 5 on a fishing expedition	Type	Phone Number	Ext
	▶ MOBL	412-332-5554	
	HOME	412-336-1322	

#### To Review Building Information


- ⊕ From the Windows **Start** menu, select the **Programs** option **FIREHOUSE Software Mobile** folder then select the **Preplan Viewer** option. FH Mobile Preplans is opened with the **Search** form active.
- ⊕ Locate the occupancy to display and highlight, then press **Select** (also note that you can double click or press **Enter** to open the highlighted occupancy).
- ⊕ The selected occupancy is opened with active options based on included records.
- ⊕ Click  **Building**. The *Building Information* page is displayed.

#### To Review Needed Fire Flow


- ⊕ From the Windows **Start** menu, select the **Programs** option **FIREHOUSE Software Mobile** folder then select the **Preplan Viewer** option. FH Mobile Preplans is opened with the **Search** form active.
- ⊕ Locate the occupancy to display and highlight, then press **Select** (also note that you can double click or press **Enter** to open the highlighted occupancy).
- ⊕ The selected occupancy is opened with active options based on included records.
- ⊕ Click  **Needed Fire Flow**. The *Fire Flow Information* page is displayed.

#### To Review Information and Alerts (Preplans)

- ⊕ From the Windows **Start** menu, select the **Programs** option **FIREHOUSE Software Mobile** folder then select the **Preplan Viewer** option. FH Mobile Preplans is opened with the **Search** form active.
- ⊕ Locate the occupancy to display and highlight, then press **Select** (also note that you can double click or press **Enter** to open the highlighted occupancy).
- ⊕ The selected occupancy is opened with active options based on included records.

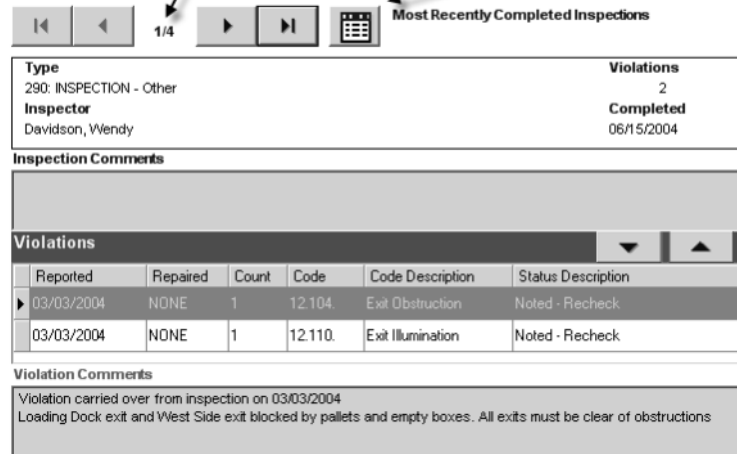
- ⊕ Click  **Info & Alerts**. The *Additional Preplan Information & Alerts* page is displayed.
- ⊕ Highlight a record in the data grid to display the notes for the information or alert.

#### To Review Inspections

- ⊕ From the Windows **Start** menu, select the **Programs** option **FIREHOUSE Software Mobile** folder then select the **Preplan Viewer** option. FH Mobile Preplans is opened with the **Search** form active.
- ⊕ Locate the occupancy to display and highlight, then press **Select** (also note that you can double click or press **Enter** to open the highlighted occupancy).
- ⊕ The selected occupancy is opened with active options based on included records.
- ⊕ Click  **Completed Inspections**. The *Most Recently Completed Inspections* page is displayed.

When multiple inspections records are available, the navigation buttons allow you to browse available records

Click to display a list of inspections



<b>Type</b>	290: INSPECTION - Other	<b>Violations</b>	2
<b>Inspector</b>	Davidson, Wendy	<b>Completed</b>	06/15/2004


**Inspection Comments**

Reported	Repaired	Count	Code	Code Description	Status Description
03/03/2004	NONE	1	12.104	Exit Obstruction	Noted - Recheck
03/03/2004	NONE	1	12.110	Exit Illumination	Noted - Recheck


**Violation Comments**

Violation carried over from inspection on 03/03/2004  
Loading Dock exit and West Side exit blocked by pallets and empty boxes. All exits must be clear of obstructions


#### To Review Chemicals

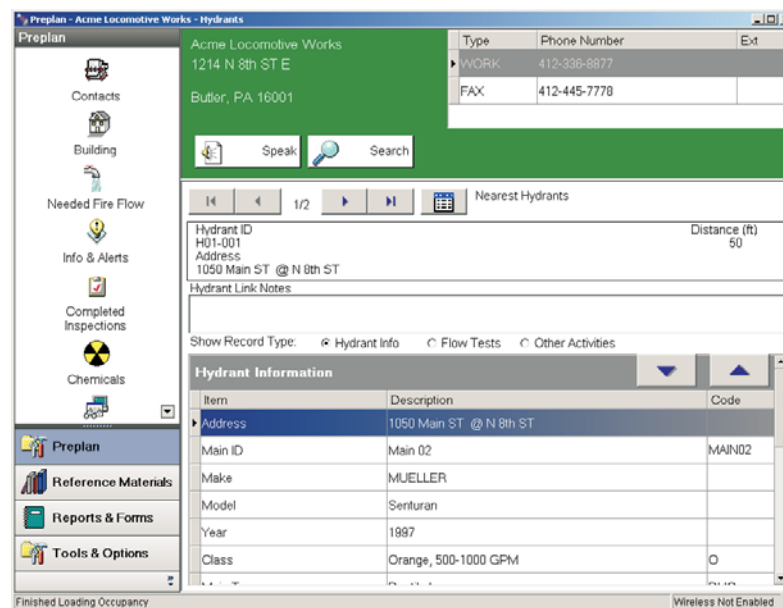
- ⊕ From the Windows **Start** menu, select the **Programs** option **FIREHOUSE Software Mobile** folder then select the **Preplan Viewer** option. FH Mobile Preplans is opened with the **Search** form active.
- ⊕ Locate the occupancy to display and highlight, then press **Select** (also note that you can double click or press **Enter** to open the highlighted occupancy).
- ⊕ The selected occupancy is opened with active options based on included records.
- ⊕ Click  **Chemicals**. The *Chemical Name* page is displayed.
- ⊕ When additional information from the Emergency Response Guidebook (ERG) is available, the **Guide** button is displayed. Press **Guide** to display additional information on the chemical.
- ⊕ When multiple chemicals are available, use the record navigation buttons to browse chemical records.

### To Review Onsite Materials

- From the Windows **Start** menu, select the **Programs** option **FIREHOUSE Software Mobile** folder then select the **Preplan Viewer** option. FH Mobile Preplans is opened with the **Search** form active.
- Locate the occupancy to display and highlight, then press **Select** (also note that you can double click or press **Enter** to open the highlighted occupancy).
- The selected occupancy is opened with active options based on included records.
- Click  **On-site Materials**. The *On-Site Materials* page is displayed.


### To Review Nearby Hydrants

- From the Windows **Start** menu, select the **Programs** option **FIREHOUSE Software Mobile** folder then select the **Preplan Viewer** option. FH Mobile Preplans is opened with the **Search** form active.
- Locate the occupancy to display and highlight, then press **Select** (also note that you can double click or press **Enter** to open the highlighted occupancy).
- The selected occupancy is opened with active options based on included records.
- Click  **Nearest Hydrants**. The *Nearest Hydrant* page is displayed.

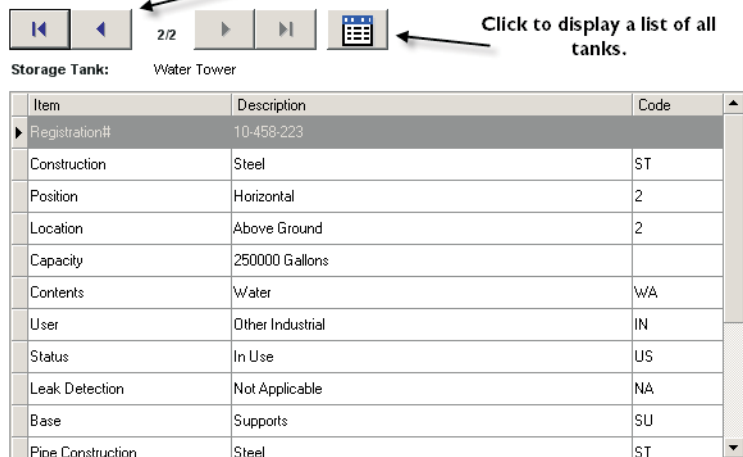


### To Review Storage Tanks

- From the Windows **Start** menu, select the **Programs** option **FIREHOUSE Software Mobile** folder then select the **Preplan Viewer** option. FH Mobile Preplans is opened with the **Search** form active.
- Locate the occupancy to display and highlight, then press **Select** (also note that you can double click or press **Enter** to open the highlighted occupancy).

- ⊕ The selected occupancy is opened with active options based on included records.
- ⊕ Click  **Storage Tanks**. The *Storage Tanks* page is displayed.


When multiple tanks are available, use the record browse buttons to change displayed tanks.

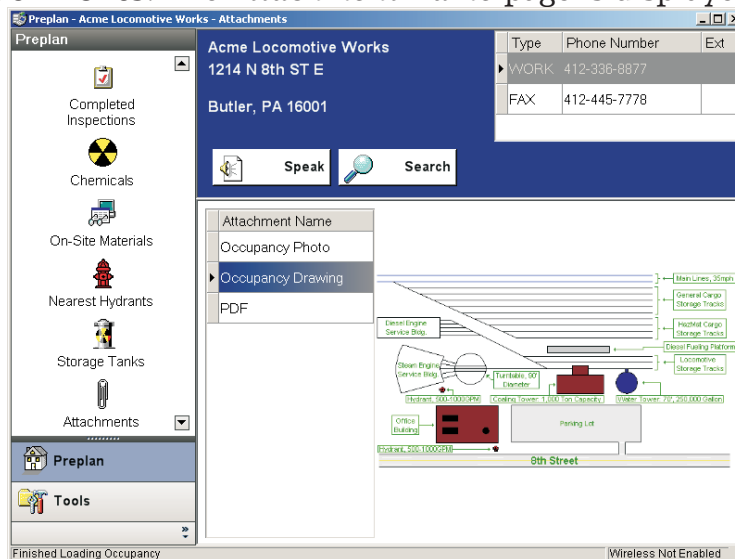


Click to display a list of all tanks.

Item	Description	Code
Registration#	10-458-223	
Construction	Steel	ST
Position	Horizontal	2
Location	Above Ground	2
Capacity	250000 Gallons	
Contents	Water	WA
User	Other Industrial	IN
Status	In Use	US
Leak Detection	Not Applicable	NA
Base	Supports	SU
Pipe Construction	Steel	ST

### To Review Attachments

- ⊕ From the Windows **Start** menu, select the **Programs** option **FIREHOUSE Software Mobile** folder then select the **Preplan Viewer** option. FH Mobile Preplans is opened with the **Search** form active.
- ⊕ Locate the occupancy to display and highlight, then press **Select** (also note that you can double click or press **Enter** to open the highlighted occupancy).
- ⊕ The selected occupancy is opened with active options based on included records.
- ⊕ Click  **Attachments**. The *Attachment Name* page is displayed.



Preplan - Acme Locomotive Works - Attachments

Acme Locomotive Works  
1214 N 8th ST E  
Butler, PA 16001

Type Phone Number Ext  
WORK 412-338-8877  
FAX 412-445-7778

Attachment Name

- Occupancy Photo
- Occupancy Drawing
- PDF

Diagram labels: Main Entry, 25mph; General Cargo (Storage Tanks); Hoistbed Cargo (Storage Tanks); Diesel Fueling Platform; Locomotive (Storage Tanks); Steam Engine (Service Bids); Turbine (00) (Liquor); Cooling Tower (11,000 Gallons); Water Tower (2,250,000 Gallons); Critical Building; Parking Lot; 8th Street; 8th Street, 500, 1000, 1500

Finished Loading Occupancy | Wireless Not Enabled

- ⊕ Select the attachment listed in *Attachment Name* to display the attachment:


- ⊕ If the attachment is a BMP, JPG, PNG, ICO, GIF, or PDF format and embedded the attachment is displayed. All other embedded attachments can be accessed by double-clicking:
  - ⊕ When the attachment's extension is associated with an application installed at the mobile workstation, the attachment is opened by the application associated with the extension.
  - ⊕ When the attachment's extension is not associated with an application installed at the mobile workstation, you are prompted to associate an application with the extension.
- ⊕ If you have added an **Attachments** subdirectory to the central reference directory and populated that folder with your occupancy attachments, you can double click the attachment name listed to access the attachment (occupancy attachments can also be manually copied to the local FH Mobile directory (**C:\Program Files\FIREHOUSE Software Mobile\** by default, yours may be different) **Attachments** subdirectory if you have not specified a central reference file directory).

See 'To Specify Central Reference Materials Location' on page 11 for the steps to specify the central location.



Attachments get their name from the *Name of file to open* value in FH or, if *Name of file to open* is empty, the *Attachment Name* value for the attachment.

#### To Review User-Defined Field Entries

- ⊕ From the Windows **Start** menu, select the **Programs** option **FIREHOUSE Software Mobile** folder then select the **Preplan Viewer** option. FH Mobile Preplans is opened with the **Search** form active.
- ⊕ Locate the occupancy to display and highlight, then press **Select** (also note that you can double click or press **Enter** to open the highlighted occupancy).
- ⊕ The selected occupancy is opened with active options based on included records.
- ⊕ Click  **User Fields**. The user fields page is displayed.
- ⊕ When multiple pages are defined in the user field form, select the section to display in the *Page* drop-down.

#### To Review Last Occupancy Modifications and Synchronization Dates

- ⊕ From the Windows **Start** menu, select the **Programs** option **FIREHOUSE Software Mobile** folder then select the **Preplan Viewer** option. FH Mobile Preplans is opened with the **Search** form active.
- ⊕ Locate the occupancy to display and highlight, then press **Select** (also note that you can double click or press **Enter** to open the highlighted occupancy).
- ⊕ The selected occupancy is opened with active options based on included records.

- ⊕ Click  **Record Update Information**. The record update page is displayed.

## Accessing Reference Material

Your department may have developed standard operating procedures, or have occupancy attachments that need to be referred to in the course of operations. For your convenience, FH Mobile Preplans installs the 2004 Emergency Response Guide. All reference material is stored in a Windows directory named **Reference** located in the FH Mobile program directory (**C:\Program Files\FIREHOUSE Software Mobile** by default). The files must be in a format that can be viewed by applications installed on the mobile computer. You can specify a central location where reference files are stored and distributed to FH Mobile equipped computers. You can optionally configure attachments, images, and map directories.

### To Access Reference Material

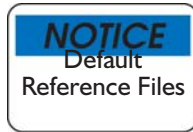
- ⊕ From the Windows **Start** menu, select the **Programs** option **FIREHOUSE Software Mobile** folder then select the **Preplan Viewer** option. FH Mobile Preplans is opened.
- ⊕ Select the **Reference Materials** area. Available reference materials are listed.
- ⊕ Click on the listed reference material to display.

### To Add Reference Materials to Central Location

#### Using Windows Explorer:

- ⊕ Locate the file you wish to add to the reference folder. If necessary, use Windows Search:
  - ⊕ Click the Windows **Start** button **Search** option **For Files or Folders** option.
  - ⊕ Type the file name to find.
  - ⊕ Press **Search**.
- ⊕ Click the file or folder you want to copy.
- ⊕ Select the Windows Explorer **Edit** menu **Copy** option.
- ⊕ Open the central reference material location specified in FH Mobile global options.
- ⊕ Select the Windows Explorer **Edit** menu **Paste** option.

When FH Mobile is synchronized with the FH database, the file modification dates are compared. When the modified dates are different or when a file is included in the central location that is not included in the FH Mobile reference folder, the file from the central reference material folder is copied to the FH Mobile computer.



When file modification dates are different, the file from the central location is copied to the FH mobile reference folder even when the most recently modified file is located in the FH Mobile reference folder. To distribute changed reference files to all FH Mobile computers, place modified reference files in the central location.

All files in the **C:\Program Files\FIREHOUSE Software Mobile\Reference** folder on the mobile computer are displayed in the **Reference Materials** area.

To Add Occupancy Attachments Subdirectory to Central Location



Complete the following procedure only if you have FH Mobile Preplans installed and attachments to review.

Using Windows Explorer:

- Open the central reference material location specified in FH Mobile global options.  
See 'To Specify Central Reference Materials Location' on page 11 for the steps to specify the central location.
- Select the Windows Explorer **File** menu **New** option **Folder** option.
- Type "Attachments".

All files in the **C:\Program Files\FIREHOUSE Software Mobile\Attachments** folder on the mobile computer are accessed by FH Mobile Preplans records with attached files.

# Chapter 4

## Troubleshooting Issues of FH Mobile Preplans

Below are some potential issues you may encounter while using FH Mobile Preplans:

### Records Not Synchronized

If you are prompted that records did not synchronize, we recommend rerunning the data synchronization.

### Synchronization Does Not Run From Inside FH Mobile Preplans

Check that the **FHMOBILE\_SYNC.EXE** is in the main install directory. It is a separate application to allow it to be run independently from the FH Mobile Preplans application, and if it is not in the install directory it will not work.

### Licensing Expired Evaluations

If the evaluation expires and then you purchase an FH Mobile Preplans license, you will be unable to get into FH Mobile Preplans, even after licensing the product. You need to run the synchronization from the Windows **Start** button, **Programs** option **FIREHOUSE Software Mobile** option, then select the **Sync Data** option.

### Slow Record Access

If you open an occupancy in FH Mobile Preplans and notice a long delay before the occupancy information is displayed and you synchronize with an FH Enterprise database, you may have *Enable Real-Time Wireless Connection to the Enterprise Database* enabled. If you regularly synchronize your database, you can disable this feature:

- ⊕ From the Windows **Start** menu, select the **Programs** option **FIREHOUSE Software Mobile** folder then select the **Preplan Viewer** option.
- ⊕ You are prompted to enter database information. Press **OK**. The **Mobile Preplan Options** form is displayed.

- ⊕ Check *Enable Real-Time Wireless Connection to the Enterprise Database* (only available for FH enterprise databases) if you have a wireless connection and wish to check for the most up-to-date record when reviewing a specific occupancy. This option will add overhead to the review process and can be slow depending on your configuration.
- ⊕ Press **Cancel**.

## Uninstalling FH Mobile Preplans

If you need to uninstall FH Mobile Preplans from a mobile computer because FH Mobile Preplans is no longer used on that mobile computer, the FH Mobile SQL instance used by FH Mobile Preplans is still installed and active. If memory and space is limited on the mobile computer, you should uninstall the FH Mobile SQL instance:

- ⊕ From the Windows **Start** menu, select **Control Panel** then choose **Add or Remove Programs**.
- ⊕ Highlight **Microsoft SQL Server 2005**, then press **Remove**.
- ⊕ Under the **SQL Server 2005 instance components** select *FHMOBILE: Database Engine*, then press **Next**.
- ⊕ Press **Finish**.
- ⊕ After the uninstall is completed, you can remove other Microsoft SQL Server components if they are no longer needed.
- ⊕ Close the **Add or Remove Programs** form.
- ⊕ The folder and table where the FH Mobile Preplans database is stored is still on the computer. You can manually delete **C:\Program Files\Microsoft SQL Server\MSSQL\$FHMOBILE** if desired.